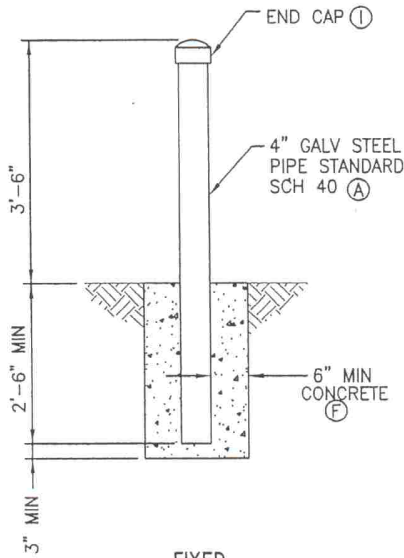
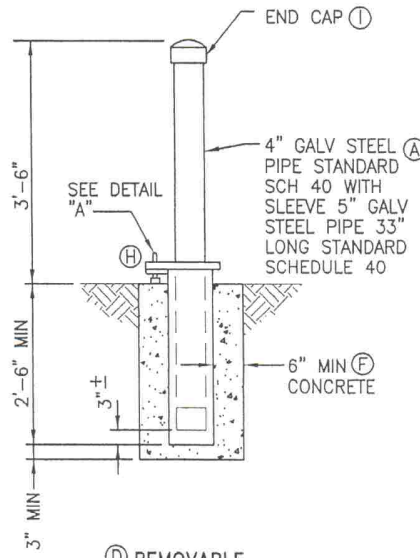


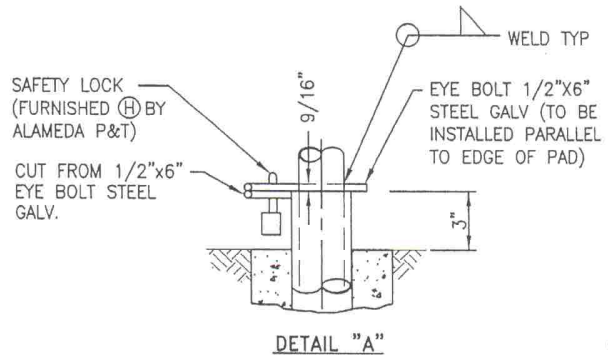
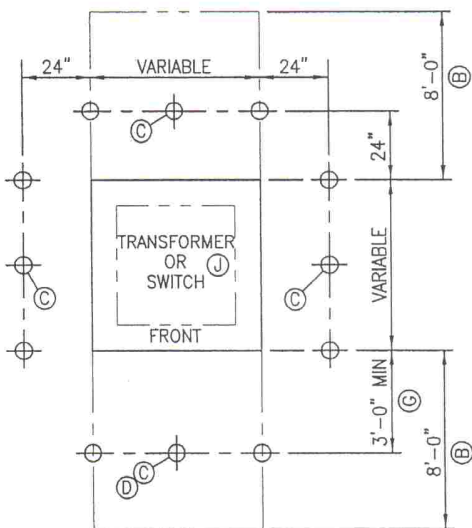
REV	DESCRIPTION	BY	DATE
1	REV. SPELLING	C.B.	4/10/06
1	CLARIFY NOTE "B" T.T.	I.T.	5/9/06



**FIXED
STEEL POST DETAIL**



**REMOVABLE
STEEL POST DETAIL**



DETAIL "A"

INSTALLATION NOTES:

- (A) USE 4 INCH GALVANIZED STEEL PIPE, WITH STANDARD SCHEDULE 40. THE PIPE SHALL BE PRIMED AND PAINTED YELLOW.
- (B) PROVIDE AN 8 FOOT MINIMUM CLEARANCE FROM ANY ABOVE GROUND OBJECT IN FRONT, AND BACK WHERE NECESSARY, OF THE PAD WHERE THE EQUIPMENT DOOR OPENS FOR HOT STICK OPERATION.
- (C) WHEN USING THE LARGEST TRANSFORMER PAD OR SWITCH PAD, ADDITIONAL BARRIERS ARE REQUIRED AS SHOWN.
- (D) ANY ADDITIONAL BARRIERS REQUIRED IN FRONT OF THE EQUIPMENT DOORS MUST BE REMOVABLE.
- (E) THE CONCRETE ENCASEMENT SHALL BE A MINIMUM OF 6 INCHES THICK.
- (G) MAY BE REDUCED TO 24 INCHES IF ALL THE BARRIER POSTS IN FRONT OF THE EQUIPMENT DOORS ARE REMOVABLE.
- (H) INSTALL PROVISION FOR SAFETY LOCK.
- (I) INSTALL WELDED END CAP AT THE TOP OF BARRIER POSTS.
- (J) PAD-MOUNTED SWITCHES HAVE DOORS IN BOTH FRONT AND BACK AND REQUIRE A 36" MINIMUM CLEARANCE. PLACE BARRIER POSTS PROPERLY TO ALLOW DOORS TO BE OPENED.

GENERAL NOTES:

1. THIS STANDARD SHOWS BARRIER POSTS REQUIRED TO PROTECT PAD-MOUNTED EQUIPMENT FROM VEHICULAR DAMAGE. BARRIER POST LOCATIONS SHALL BE APPROVED BY ALAMEDA P&T CONSTRUCTION INSPECTOR.
2. TRAFFIC POSTS ARE NOT NECESSARY IF ABOVE GROUND OBJECTS EXIST WHICH PROTECT PAD MOUNTED EQUIPMENT FROM VEHICULAR TRAFFIC.
3. CAUTION MUST BE TAKEN WHEN INSTALLING BARRIER POSTS ENSURING THAT THEY DO NOT MAKE CONTACT WITH ANY UNDERGROUND UTILITIES.
4. CALL "UNDERGROUND SERVICE ALERT" (U.S.A.) 1-800-227-2600 TWO WORKING DAYS BEFORE YOU DIG TO VERIFY THE LOCATION OF UNDERGROUND UTILITIES.



**ALAMEDA
POWER & TELECOM**
A Department of the City of Alameda

TITLE :				
EQUIPMENT BARRIER PROTECTION & CLEARANCES				
DRAWN :	L.V ANCHETA	DATE: MAY 9, 2006	DWG. NO. :	REV.
REVIEWED:	<i>[Signature]</i>	<i>[Signature]</i>	1-L-427	2
APPROVED:	<i>[Signature]</i>	<i>[Signature]</i>	SCALE : NTS	SHT 1 OF 1